

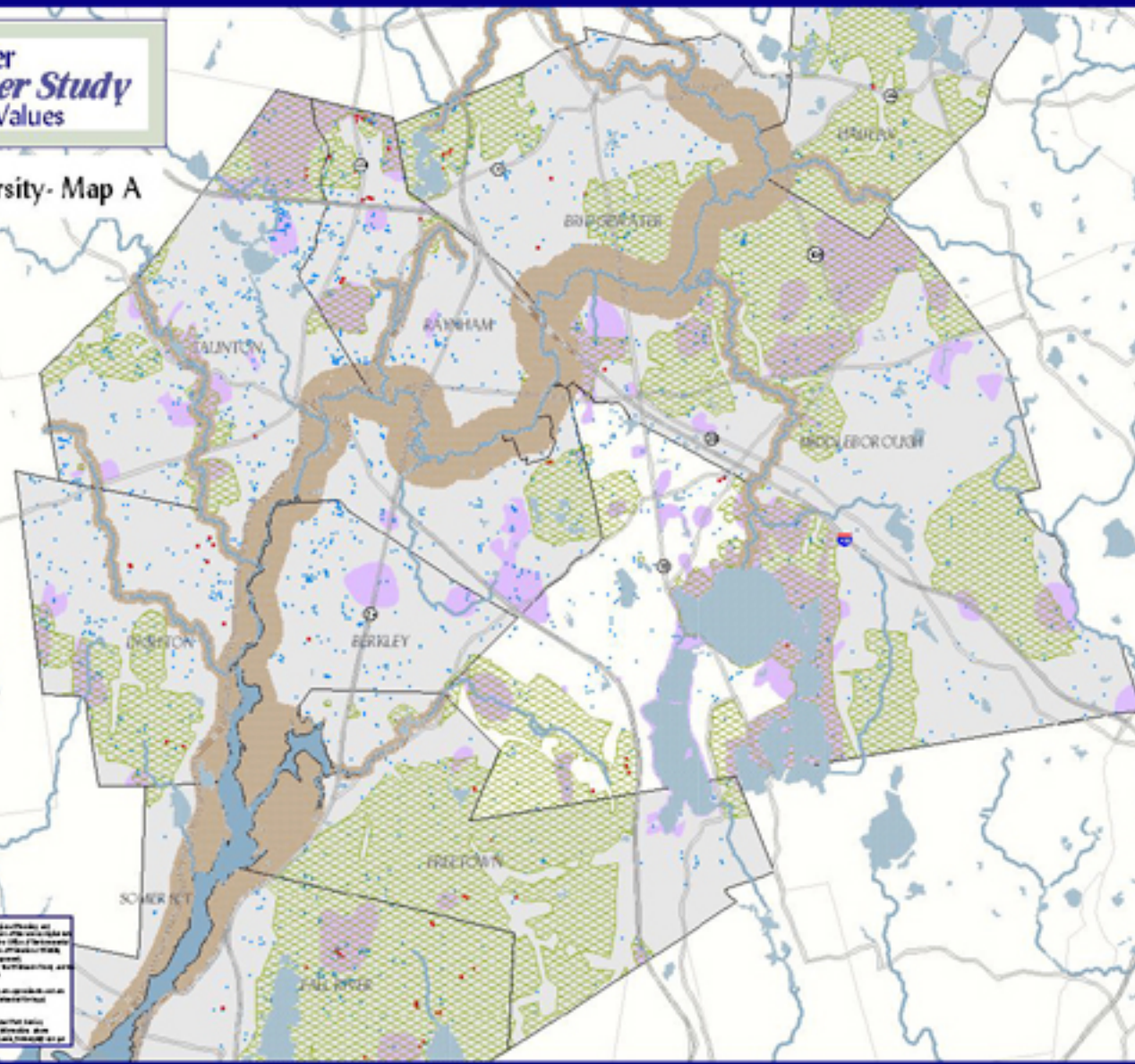
The Taunton River
Wild and Scenic River Study
 Outstanding Resource Values

Ecology and Biological Diversity- Map A



This map was prepared by the Massachusetts Department of Environmental Protection (MassDEP) as part of the Taunton River Wild and Scenic River Study. The map is intended to provide information about the river and its surrounding areas. It is not intended to be used as a legal document. For more information, please contact the MassDEP at 1-800-352-9634 or visit our website at www.mass.gov.

Map Prepared by
 DEEP
 June 2015



- 1/2 Mile (each side) Buffer Study Area for Taunton
- Buffer for Significant Tribe
- River/Streams
- Lakes/Ponds
- Major Road
- Study Area Towns
- Surrounding Towns
- RL Towns
- Certified Vernal Pools
- Potential Vernal Pools
- BioMap Core Habitat
- NHESP - Priority Habitat

For more information on the Wild and Scenic Taunton River, visit our web site at www.tauntonriver.org