

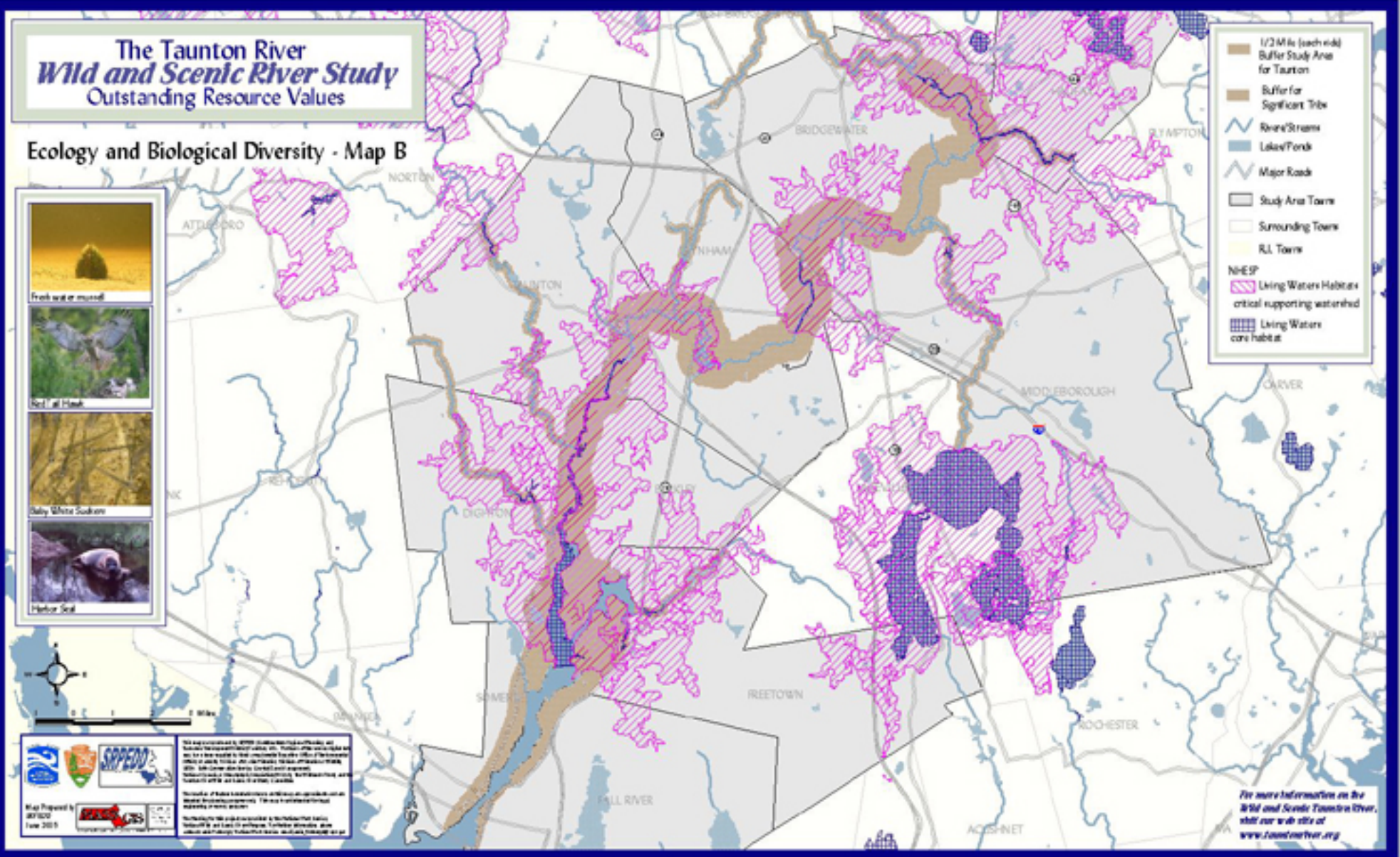
The Taunton River Wild and Scenic River Study Outstanding Resource Values

Ecology and Biological Diversity - Map B



This map was prepared by VDFW in cooperation with the Vermont Department of Environmental Conservation and the National Park Service. It is based on data provided by the Vermont Department of Environmental Conservation and the National Park Service. The map is intended to provide a general overview of the Outstanding Resource Values for the Taunton River. It is not intended to be used for legal purposes. For more information, please contact the Vermont Department of Environmental Conservation at 249 State Street, Montpelier, VT 05602. Phone: 802-241-2300. Website: www.vermont.gov

- 1/2 Mile (each side) Buffer Study Area for Taunton
- Buffer for Significant Tribe
- Rivers/Streams
- Lakes/Ponds
- Major Road
- Study Area Town
- Surrounding Town
- RI Town
- NHESP**
- Living Waters Habitat: critical supporting watershed
- Living Waters core habitat



For more information on the Wild and Scenic Taunton River, visit our web site at www.tauntonriver.org