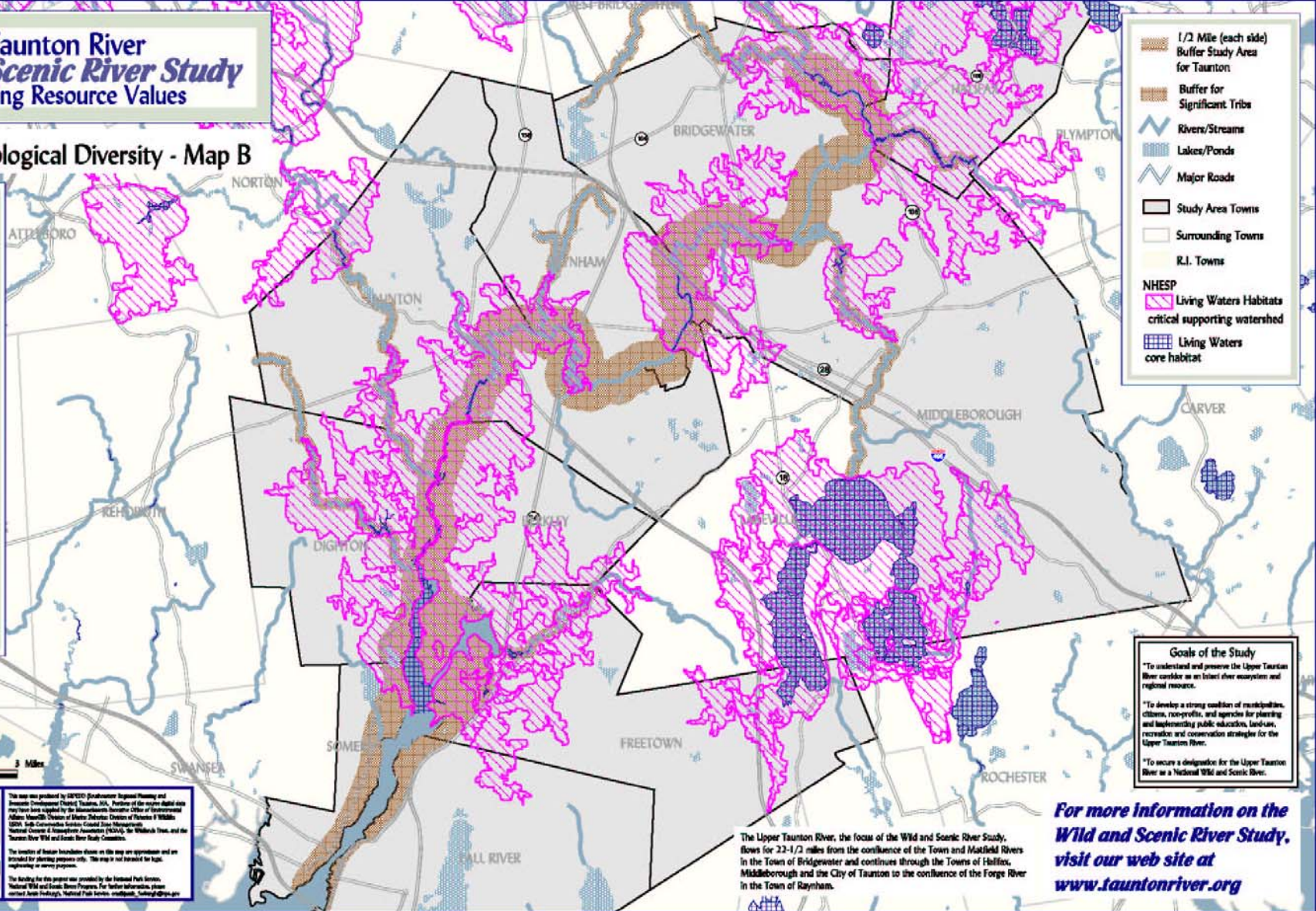


The Taunton River Wild and Scenic River Study Outstanding Resource Values

Ecology and Biological Diversity - Map B



1/2 Mile (each side)
Buffer Study Area
for Taunton

Buffer for
Significant Tribes

Rivers/Streams

Lakes/Ponds

Major Roads

Study Area Towns

Surrounding Towns

R.I. Towns

NHESP

Living Waters Habitats
critical supporting watershed

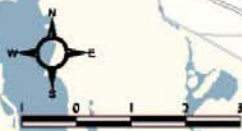
Living Waters
core habitat

Goals of the Study

*To understand and preserve the Upper Taunton River corridor as an intact river ecosystem and regional resource.

*To develop a strong coalition of municipalities, citizens, nonprofits, and agencies for planning and implementing public education, land-use, recreation and conservation strategies for the Upper Taunton River.

*To secure a designation for the Upper Taunton River as a National Wild and Scenic River.



This map was produced by SRPEDO (Southwest Regional Planning and Economic Development District), Taunton, MA. Portions of the map data and information were supplied by the Massachusetts Executive Office of Environmental Affairs, Massachusetts Division of Marine Fisheries, Division of Fisheries & Wildlife (DMF), South Coast National Estuarine Research Reserve, National Oceanic and Atmospheric Administration (NOAA), the Wildland Fire, and the Taunton River Wild and Scenic River Study Committee.

The location of design boundaries shown on this map are approximate and are intended for planning purposes only. The map is not intended for legal engineering or survey purposes.

The funding for this project was provided by the National Park Service, National Wild and Scenic Rivers Program. For further information, please contact John Fradette, National Park Service, mfradette.taunton@nps.gov

Map Prepared by
SRPEDO
May 2004

The Upper Taunton River, the focus of the Wild and Scenic River Study, flows for 22-1/2 miles from the confluence of the Town and Matfield Rivers in the Town of Bridgewater and continues through the Towns of Hallowell, Middleborough and the City of Taunton to the confluence of the Forge River in the Town of Raynham.

**For more information on the
Wild and Scenic River Study,
visit our web site at
www.tauntonriver.org**