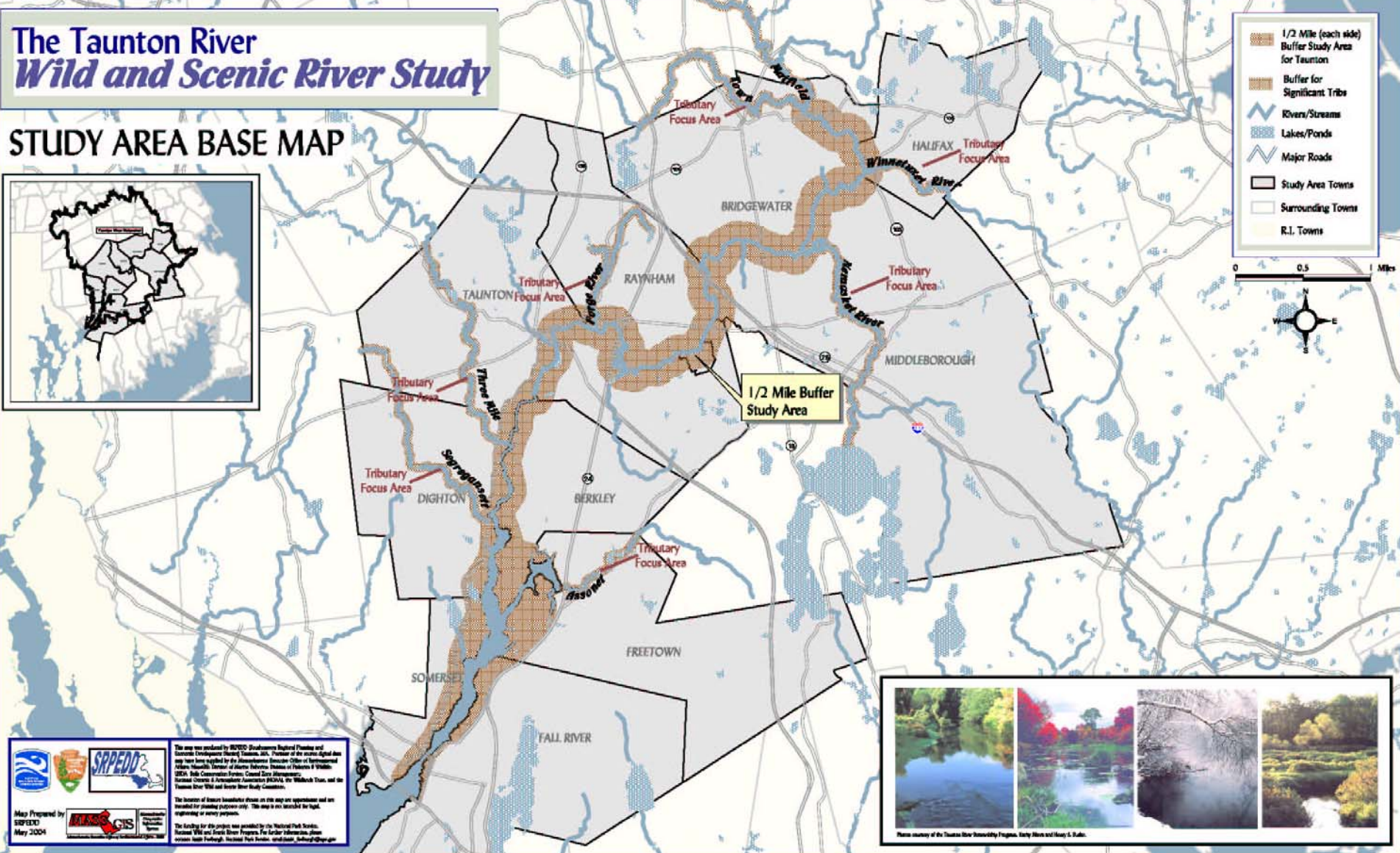


The Taunton River Wild and Scenic River Study

STUDY AREA BASE MAP



- 1/2 Mile (each side) Buffer Study Area for Taunton
- Buffer for Significant Tribe
- Rivers/Streams
- Lakes/Ponds
- Major Roads
- Study Area Towns
- Surrounding Towns
- R.I. Towns



Map Prepared by
SRPED
May 2004

This map was produced by SRPED (Southwest Regional Planning and Economic Development) through funding provided by the Massachusetts Department of Transportation (MassDOT) and the Massachusetts Department of Environmental Protection (MassDEP). The map is not intended for legal, engineering or survey purposes.

The location of some landmarks shown on this map are approximate and are intended for planning purposes only. The map is not intended for legal, engineering or survey purposes.

The funding for this project was provided by the National Park Service, National Wild and Scenic River Program. For further information, please contact: Keith Furegh, National Park Service, 440 South Main Street, Southbury, CT 06488.



Photos courtesy of the Taunton River Scenic Study Program, Kathy Alcock and Nancy G. Rubin.